

INDIAN SCHOOL SALALAH  
SECOND TERM EXAMINATION (2017-2018)  
MATHEMATICS

40

CLASS III

NAME: \_\_\_\_\_

TIME: 2 HOURS

ROLL NO. \_\_\_\_\_

DATE: \_\_\_\_\_

CLASS III \_\_\_\_\_

SUB.TEACHER'S SIGN \_\_\_\_\_

INVIGILATOR'S SIGN \_\_\_\_\_

SCRUTINIZER'S SIGN \_\_\_\_\_

**1.) FILL IN THE BLANKS.**

(10×½=5)

- a) A cube has \_\_\_\_\_ faces.
- b) Any number multiplied by zero gives \_\_\_\_\_.
- c) 1 rupee is equal to \_\_\_\_\_ paise.
- d) If we add 1 to any odd number we get an \_\_\_\_\_ number.
- e) The answer of multiplication is known as \_\_\_\_\_.
- f) A football is an example for a \_\_\_\_\_.
- g) There are \_\_\_\_\_, 25 paise in one rupee.
- h) A triangle has \_\_\_\_\_ sides.
- i) \_\_\_\_\_ is the process of repeated subtraction.
- j) There are \_\_\_\_\_ eyes for 10 dogs.

**2.) WRITE THE NUMBER NAMES FOR THE FOLLOWING.**

(3×1= 3)

- a) 217 = \_\_\_\_\_
- b) 490 = \_\_\_\_\_
- c) 605 = \_\_\_\_\_

**3.) FILL IN THE BOXES.**

(4×½=2)

20	÷ 5		+ 6		- 3		× 4	
----	-----	--	-----	--	-----	--	-----	--

**4.) WRITE THE EXPANDED FORM.** (2×1=2)

a)  $560 = \underline{\hspace{2cm}} + \underline{\hspace{2cm}} + \underline{\hspace{2cm}}$

b)  $248 = \underline{\hspace{2cm}} + \underline{\hspace{2cm}} + \underline{\hspace{2cm}}$

**5.) CONVERT THE FOLLOWING.** (4×½=2)

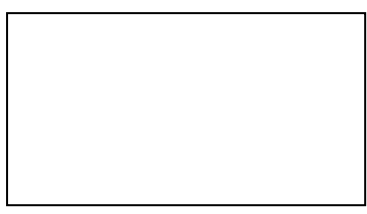
a) ₹ 25.50 = \_\_\_\_\_ p                      c) 800 p = ₹ \_\_\_\_\_

b) ₹ 12.00 = \_\_\_\_\_ p                      d) 50 p = ₹ \_\_\_\_\_

**6.) COLOUR THE EVEN NUMBERS.** (3)

249	900	348	477
671	321	892	566
444	706	131	259

**7.) LOOK AT THE FIGURE AND THEN COMPLETE.** (4×½=2)



- a) This is a \_\_\_\_\_ .
- b) It has \_\_\_\_\_ sides and \_\_\_\_\_ corners.
- c) Opposite sides of this figure are \_\_\_\_\_ in length.

**8.) WRITE THE 2 DIVISION FACTS.** (2×1=2)

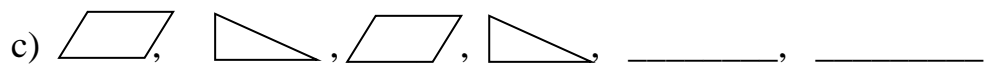
$7 \times 8 = 56$
-------------------

- a) \_\_\_\_\_
- b) \_\_\_\_\_

**9.) COMPLETE THE PATTERN.** (3×1=3)

a) 29 , 31 , 33 , \_\_\_\_\_ , \_\_\_\_\_

b)  $70 \times 8$  ,  $60 \times 7$  ,  $50 \times 6$  , \_\_\_\_\_ , \_\_\_\_\_



**10.) MULTIPLY THE FOLLOWING.**

( $2 \times 1\frac{1}{2} = 3$ )

a)  $24$

$\underline{\times 12}$

b)  $324$

$\underline{\times 3}$

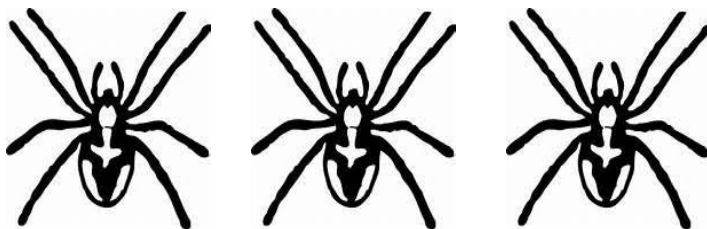
**11.) DIVIDE USING REPEATED SUBTRACTION.**

2

$44 \div 11$

**12.) OBSERVE THE PICTURE AND ANSWER.**

( $1\frac{1}{2}$ )



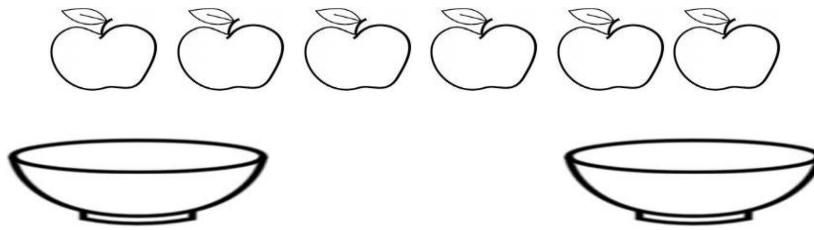
There are \_\_\_\_\_ spiders.

There are \_\_\_\_ legs for each spider.

Multiplication fact = \_\_\_\_\_

13.) PUT THESE APPLES EQUALLY IN THE GIVEN BOWLS AND THEN COMPLETE.

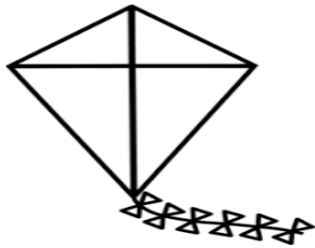
(1½)



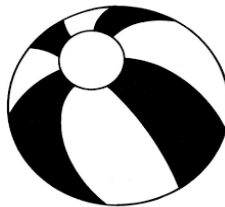
$$\underline{\quad} \div \underline{\quad} = \underline{\quad}$$

14.) SHOPPING.

(2×1=2)



₹ 10.50



₹ 50.00



₹ 257.75

a) Find the cost of a bat and a ball

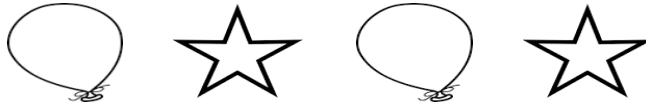
b) Find the cost of 2 kites.

15.) TICK THE CORRECT ANSWER.

(2×1=2)

a) Nisha and Raj arranged balloons and stars as follows.

Nisha's arrangement

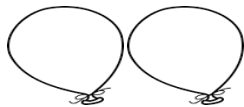


Raj's arrangement



What more should Nisha keep to look like Raj ?

1)



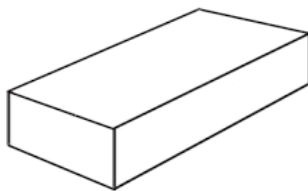
2)



3)



b) Shown below is a cuboid.



Which one of these object has the **SAME** shape ?

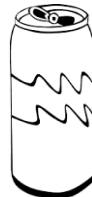
1)



2)



3)



4)



**16.) SOLVE THE PROBLEMS.**

(2×2=4)

- a) Tom has ₹88.00 with him. He bought a toy for ₹56.00. How much money is left with him ?

---

---

---

---

---

- b) Mickey reads 63 pages in a day. How many pages will he read in 3 days?

---

---

---

---

---